
September 2025

Year 11 Parent Information Evening



Bacon's College

The best in everyone™

Part of United Learning

I came to give life, life in all its fullness (John 10:10)

Agenda

- Introduction & Opening Prayer
- Bacon's College Sixth Form
- Year 11 Journey – Key Dates & Milestones
- Effective Revision Strategies & Home Support
- Wellbeing, Attendance & Pastoral Support
- Q&A
- Thank you & Close

Opening Prayer and Blessing

Let us pray.

Heavenly Father,

We thank You for gathering us here this evening as one school community — staff, parents, and students. We pause to acknowledge Your presence in our midst and to invite Your Spirit to guide our time together.

Lord, we thank You for the gift of education, for the opportunity to nurture young minds and hearts, and for the partnership between home and school that strengthens the lives of our students.

We remember the values that guide us here at Bacon's College — **Courage, Faith, Integrity, Respect, and Compassion**. May these values not only shape our school environment but also inspire our students to grow into men and women of character who will make a difference in the world.

We ask for your blessing on the conversations and connections we share this evening. May this school continue to be a place where light shines, where lives are enriched, and where every young person can flourish in the fullness of life You promise.

We ask all this in the precious name of Jesus Christ our Lord.

Amen.

Mission Statement

Bacon's College ensures that every student is well educated, cared for and exhorted to achieve the academic and personal excellence that will lead to university or skilled work and to a fulfilled life.

John 10:10: 'I came to give life, life in all its fullness'

Why are we here? What does the evidence show?

Parental Engagement

+4
months
progress

(source: EEF teaching and learning toolkit)

Bacon's College Sixth Form



Bacon's College

The best in everyone™

Part of United Learning

I came to give life, life in all its fullness (John 10:10)

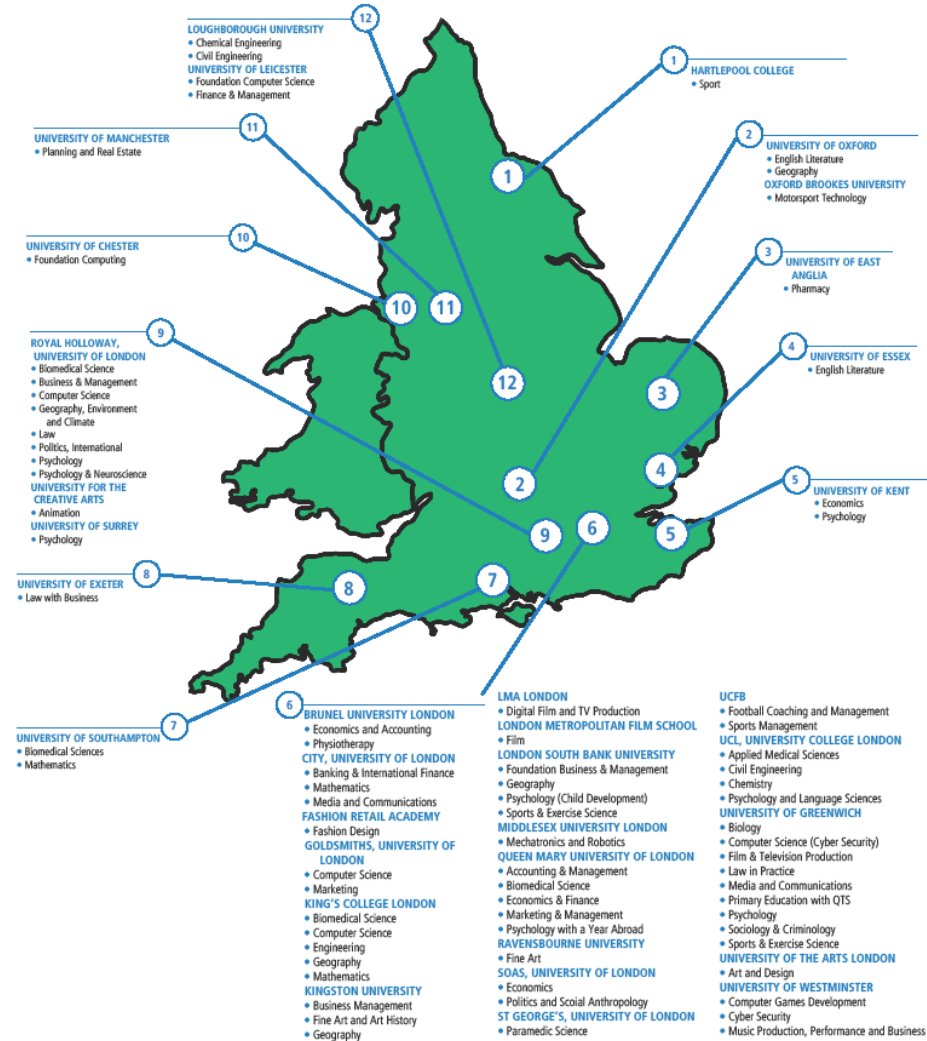
Sixth form timeline the next few months

1. ~~Spoke to students a few weeks ago~~
2. Information Evening
3. Internal Open Evening 9th October – 16.15 start
 - More detail on the sixth form and the opportunity to speak to subject teachers and current students
4. Sixth form Taster day in November
 - Experience a day in the sixth form, with a taster lesson in each subject students are interested in
5. Opportunity to meet current students again at parent's evening
6. Applications open following taster day and close in December



Bacon's College
The best in everyone™
Part of U-trad Learning

STUDENT DESTINATIONS



Changes between year 11 and Sixth Form

- Late starts and early finishes
- One-to-one Mentoring
- Dedicated Application Advisor
- Best in Everyone Lessons
- Bacon's Service
- Study periods

Things to bear in mind

- We are academically ambitious, so if students choose to stay they should recognise they will need to work hard
 - Staying means teachers know students and can support them from the very start
 - Lots and lots of opportunities, DofE, Mark Evison, mediation team, finance visits, Oxbridge visits, Dept of Trade visits, amicable society grant
 - We will always prioritise a student's wellbeing over academic results
-

Last year's year 11s

- 7 of the top 10 academic performers chose to stay
- 13 of the top 17
- 21 of the top 30

Our ***two lowest academic achievers*** in year 12 averaged 4 in their GCSE.

We rejected a lot who were academically stronger.

We allowed them to stay because of the effort and attitude we saw in year 11 and the belief we have that they can do well.

They did well in their Vocational GCSE's and English (5 in either Lang or Lit) and Maths (4).

Both have started very well.

See you on the 9th October – 16.15pm



Bacon's College

The best in everyone™

Part of United Learning

I came to give life, life in all its fullness (John 10:10)

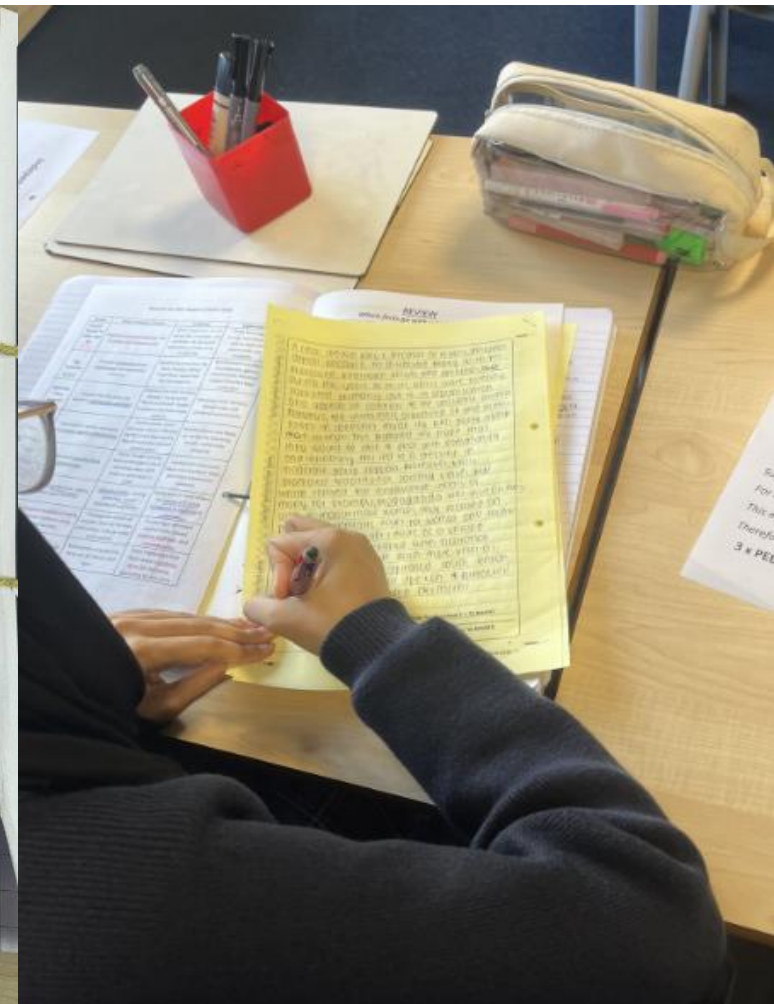
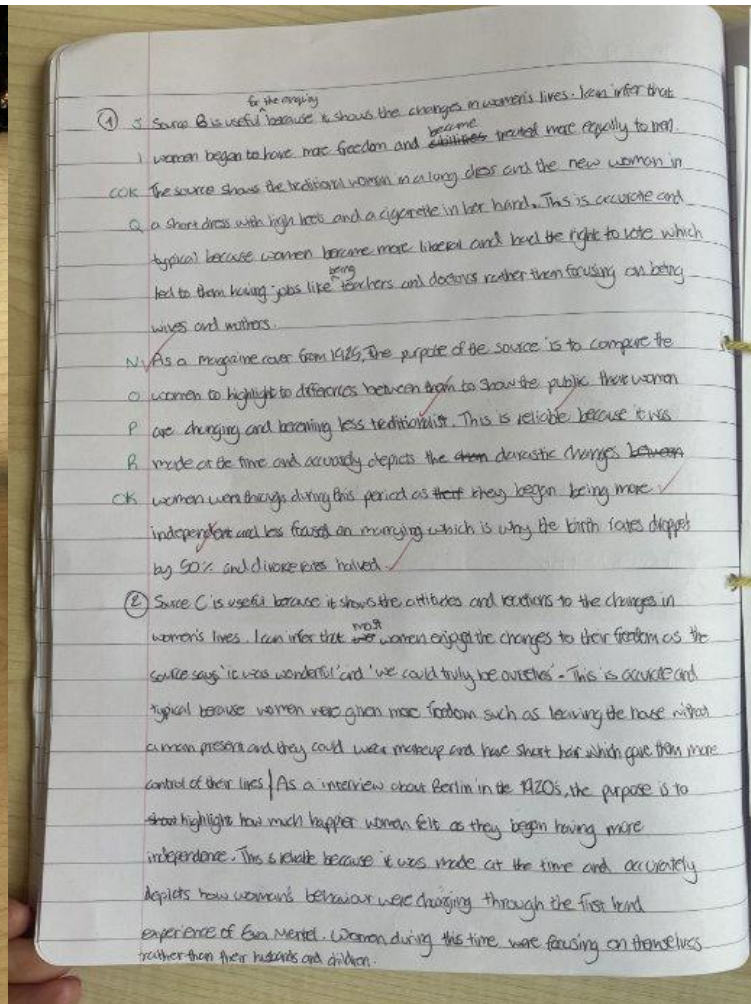
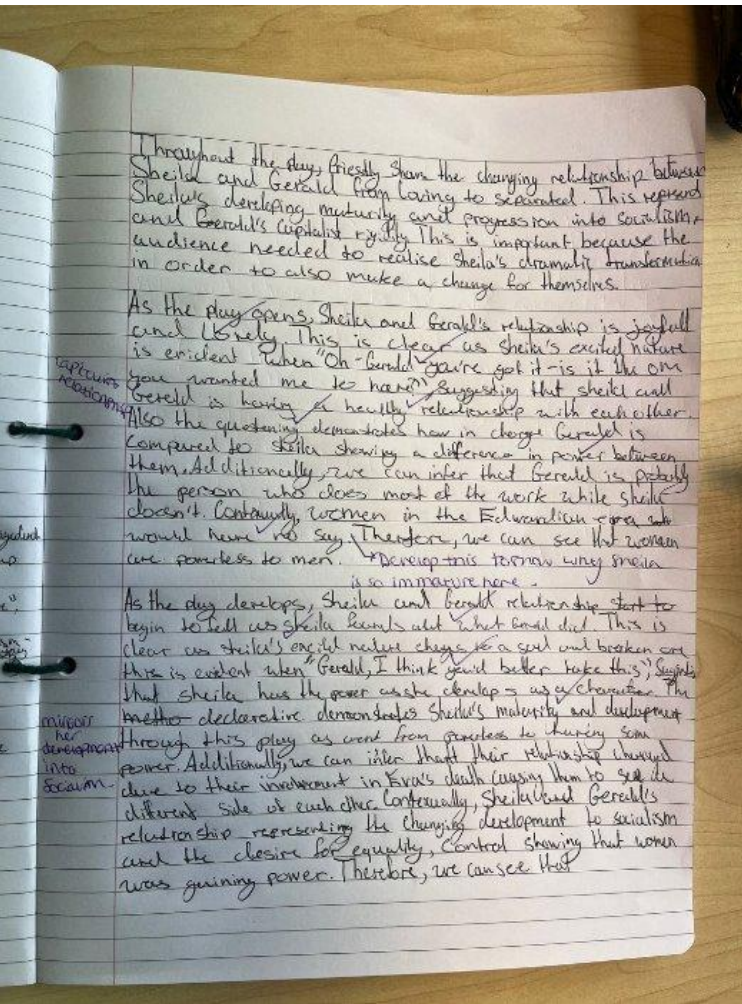
Year 11: Culture of Success

- Pastoral – Team around the students.
- Every Year 11 lesson is visited
- Assemblies & Line Ups
- High expectations – Equipment, Uniform, Homework
- No excuses – Are students taking responsibility and ownership?

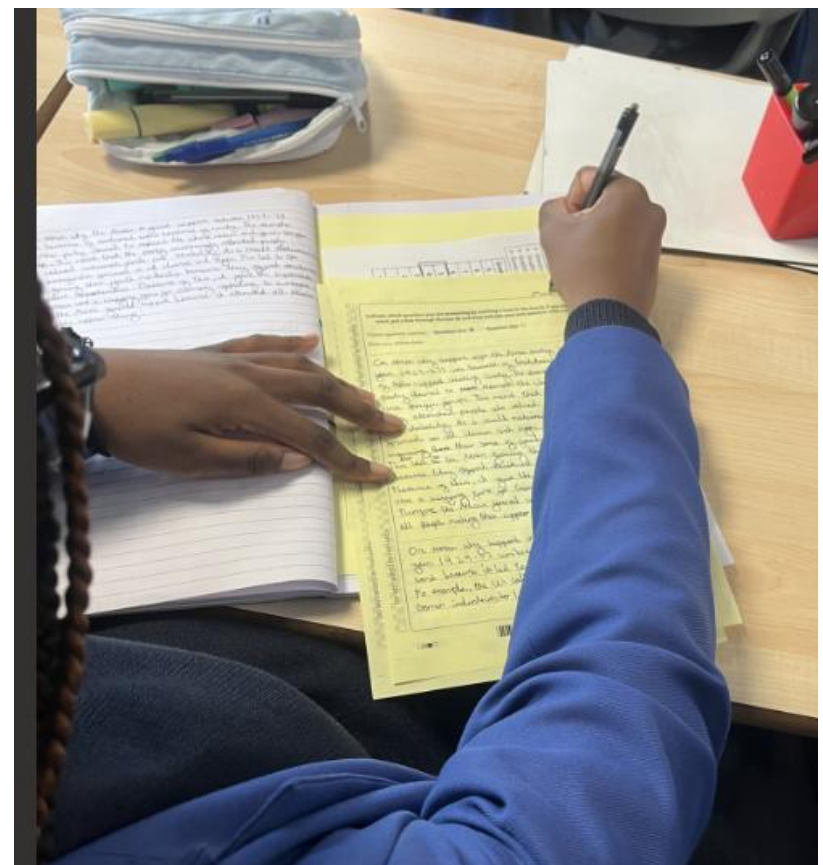
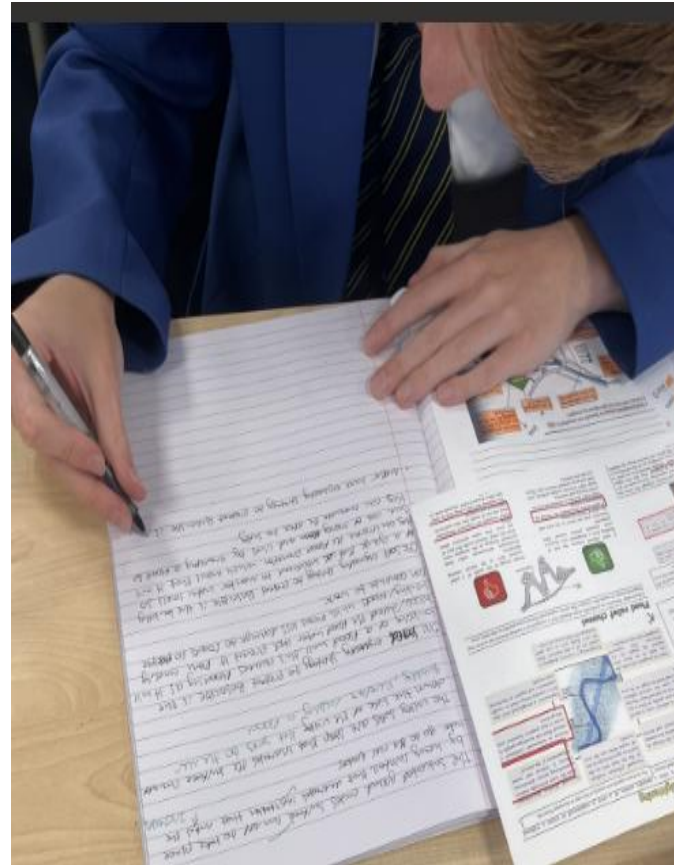
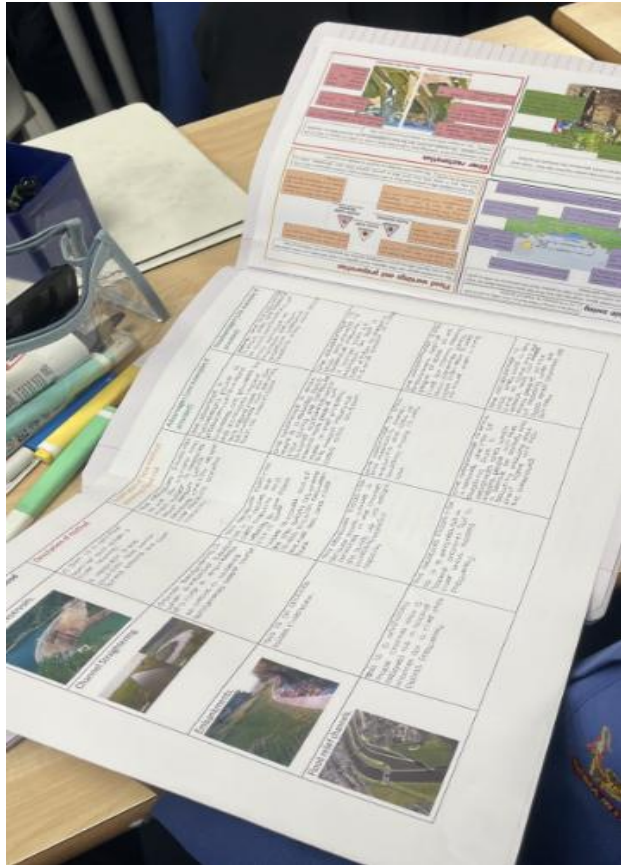
Praise and Exemplar work - BTU

- Please can you give a shout out to 11XY-SC4: 'Well done to 11XY-SC4 for 100 % homework booklet completion!' [REDACTED]
- Please give a shout out to [REDACTED] for getting 95% in their fluency test and to all 11XY-MA2 for 100% completion of SPARX homework [REDACTED]
- Shoutout for 11XYsc3 for working hard to apply their learning to answering questions on blood glucose control. They made great progress on a difficult topic - well done.
[REDACTED]
- Year 11 GCSE PE – Multiple attempts on a challenging set of homework questions to score 70% or above – [REDACTED]

Praise and Exemplar work - BTU



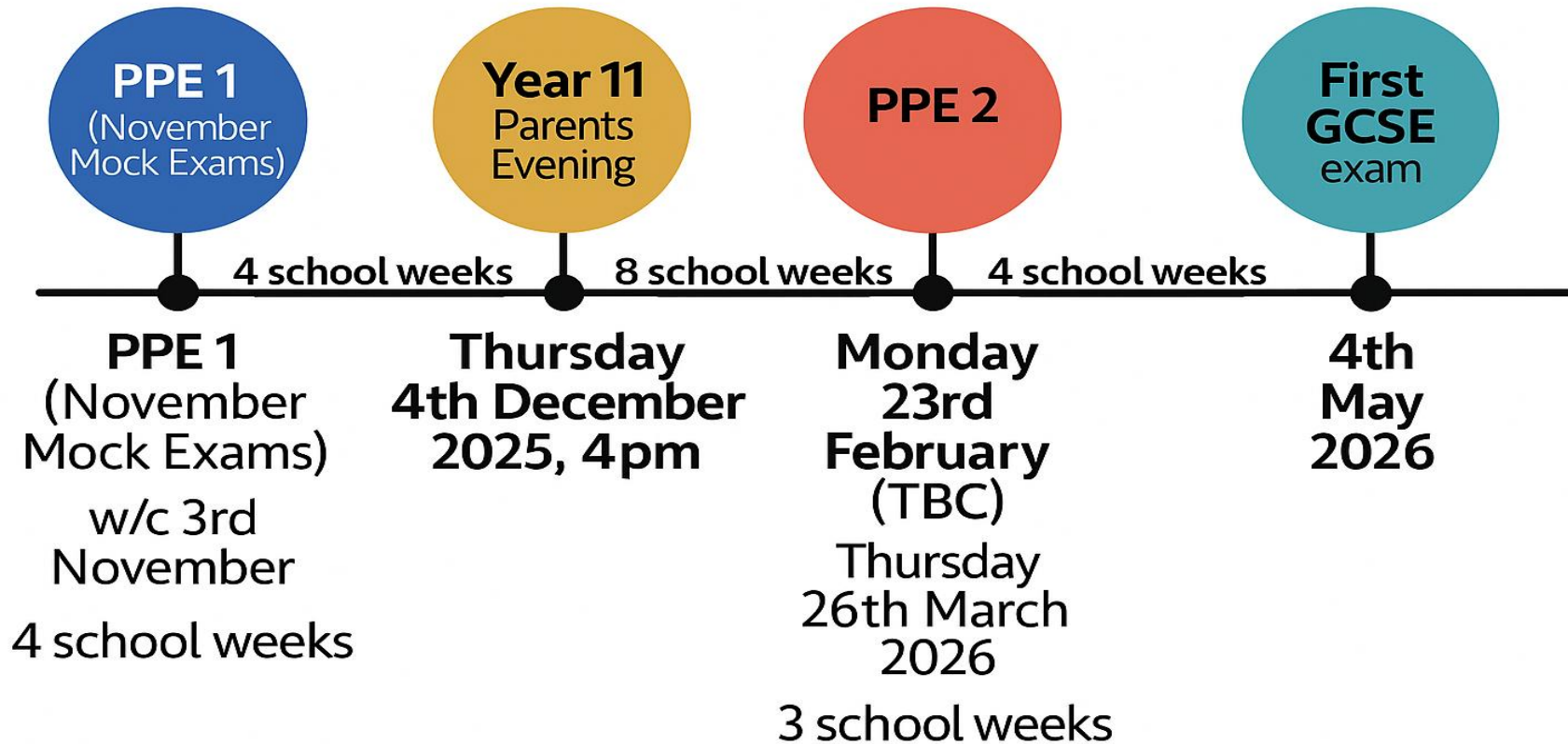
Praise and Exemplar work - BTU



Every single day....

Every Minute, Every
Lesson, Every Day

Timeline of the Year



Importance of PPEs



Builds Exam Technique



Revision can become more streamlined to focus on gaps in learning



Predict grades and set goals



Students receive feedback that matters



Motivation and momentum

Wellbeing and Support

- Safeguarding comes first.
- Weekly assemblies – adjusted this to make sure Year 11 still have contact time with tutors.
- Exam Stress Workshops – Groundworks
- 1:1 Careers appointment for all students.
- Relationships. Team around the students.
- SEND Support.

Attendance

- Year group average YTD is 95.2%
- Clear link between attendance and attainment: Missing just 10 days of school in Year 11 can reduce a student's likelihood of achieving a grade 5 or higher in English and maths GCSEs by about 50%.
- Students' responsibility to catch up.
- Parents – report absence and support students being in.



How can family members help?!

Does your child have space to revise?

If they are behaving in a stressed out manner?
Ask them about what they are learning

Agree a balance between work and social life and stick to it!

Encourage them to have breaks

Positivity!

Encourage sleep – within reason of course

Sometimes stress can look like laziness – offer support

Have a copy of their revision timetable

Communicate with us.

How do we learn?

What does the evidence show?

Parental Engagement

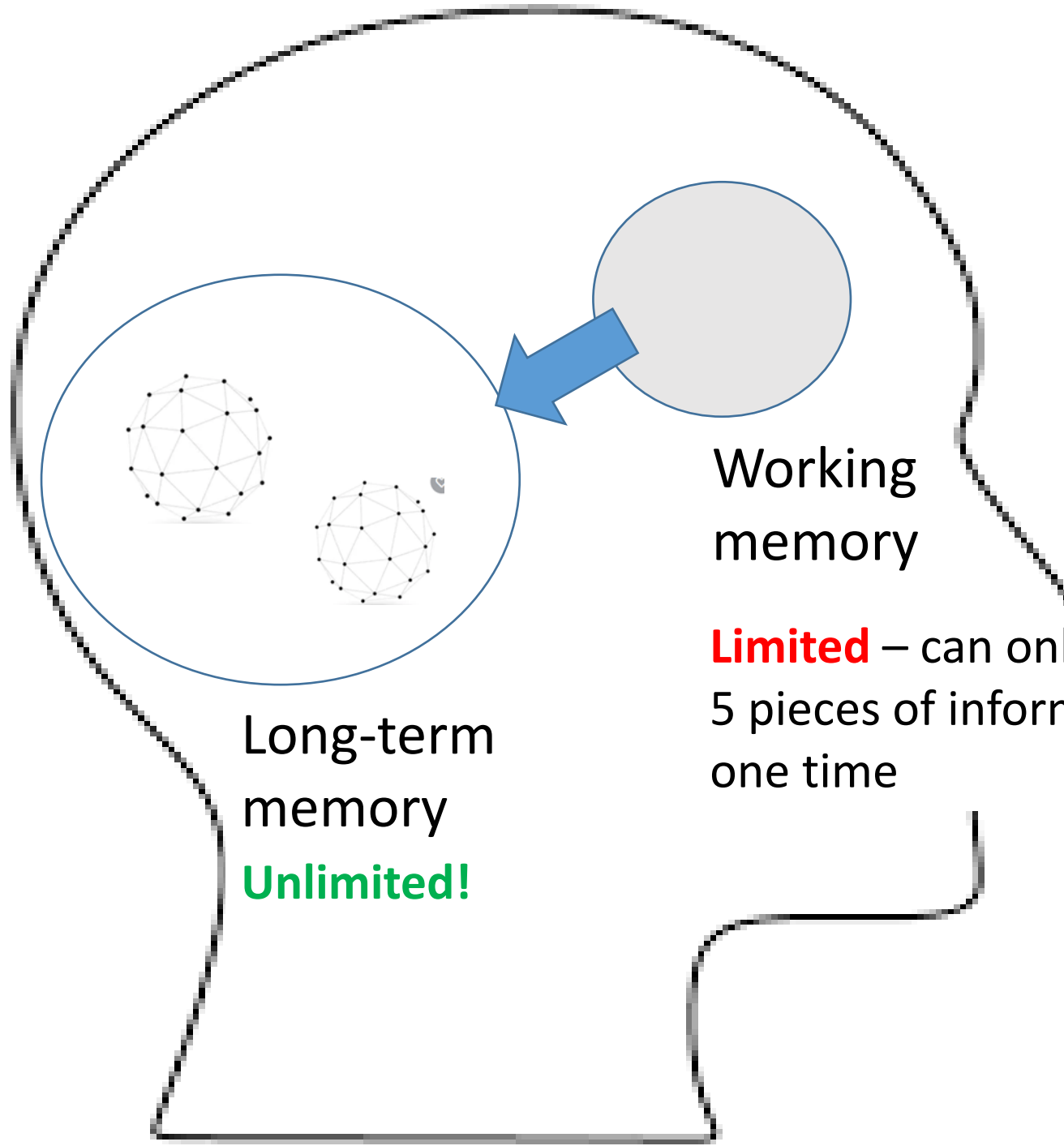
+4
months
progress

Homework and
Revision

+5
months
progress

(source: EEF teaching and learning toolkit)

Your brain is amazing



Working
memory

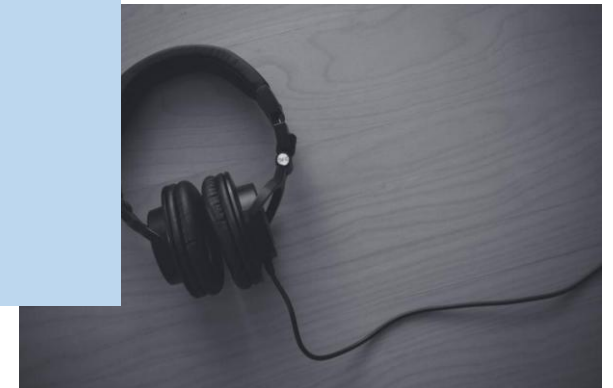
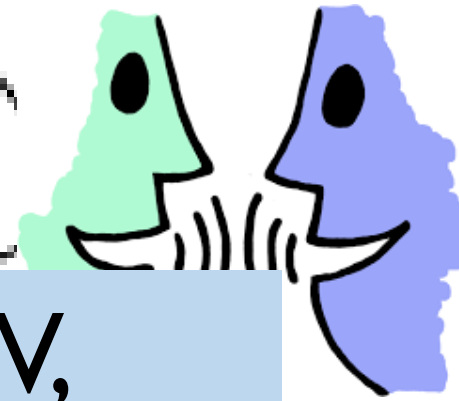
Limited – can only process
5 pieces of information at
one time

Long-term
memory
Unlimited!

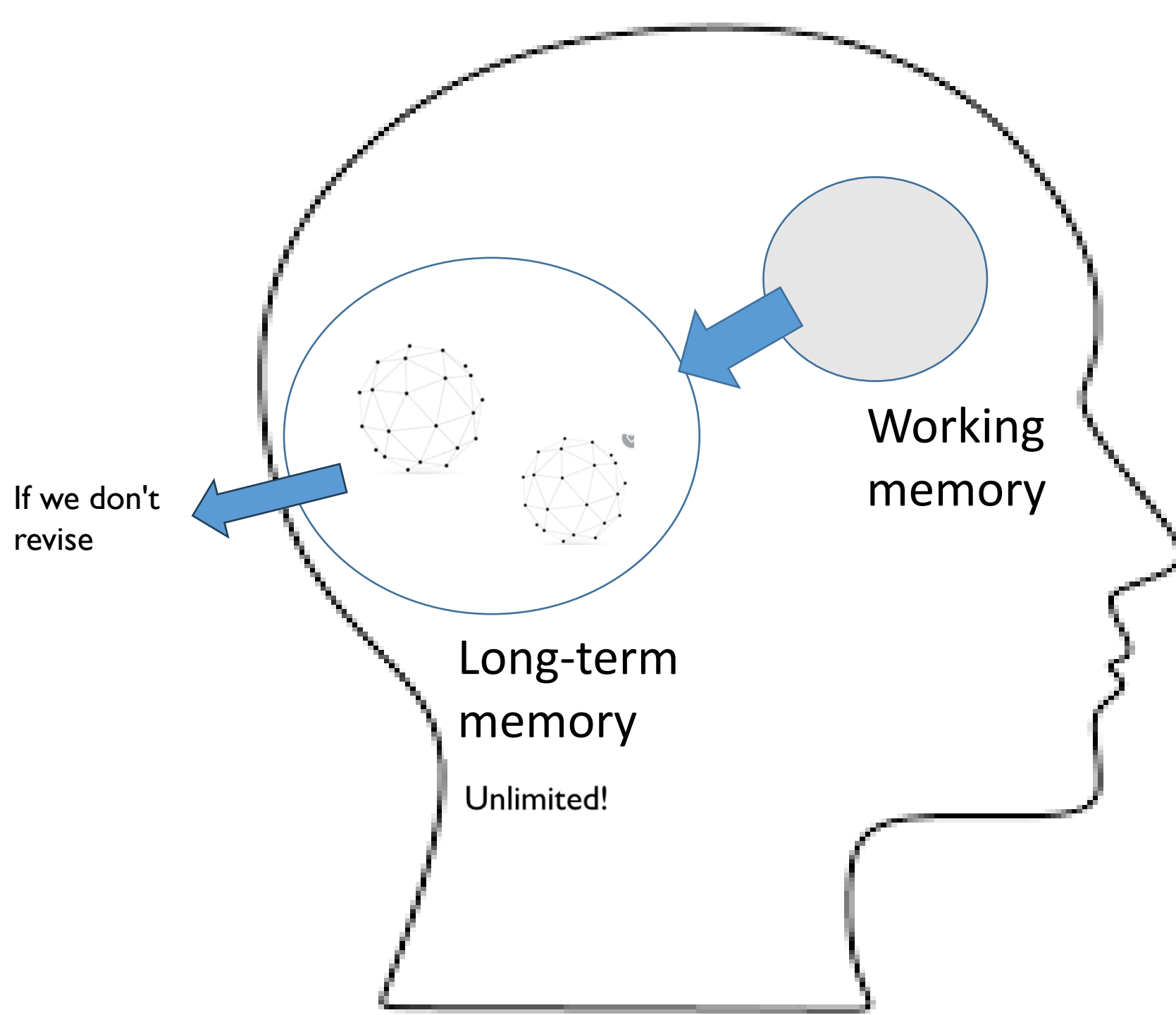
Working memory can only process around 5 pieces of information at one time

But this includes, all the noise and distractions around you

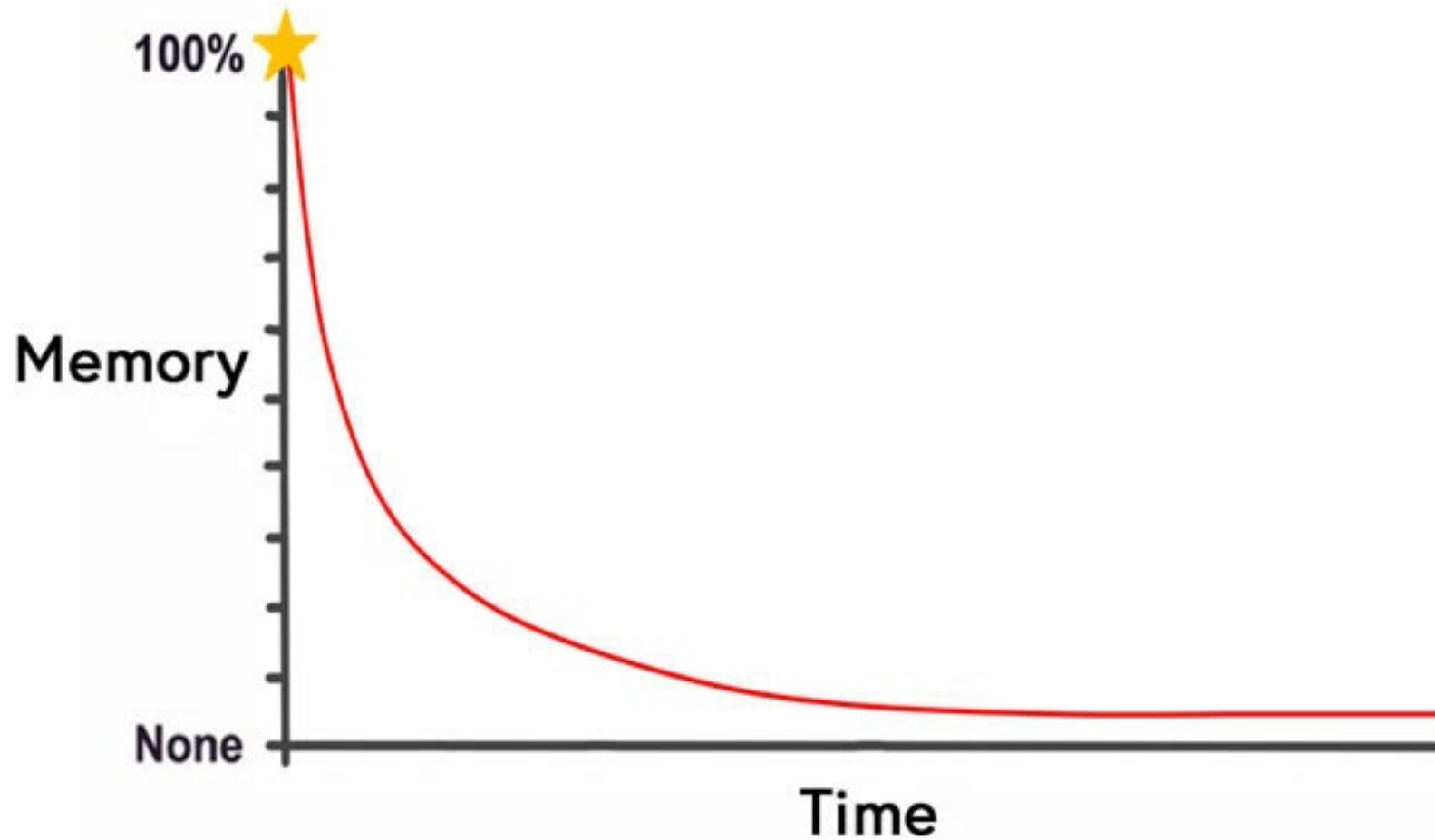
When you revise, turn off the TV, turn your phone off. Also try to avoid listening to music.



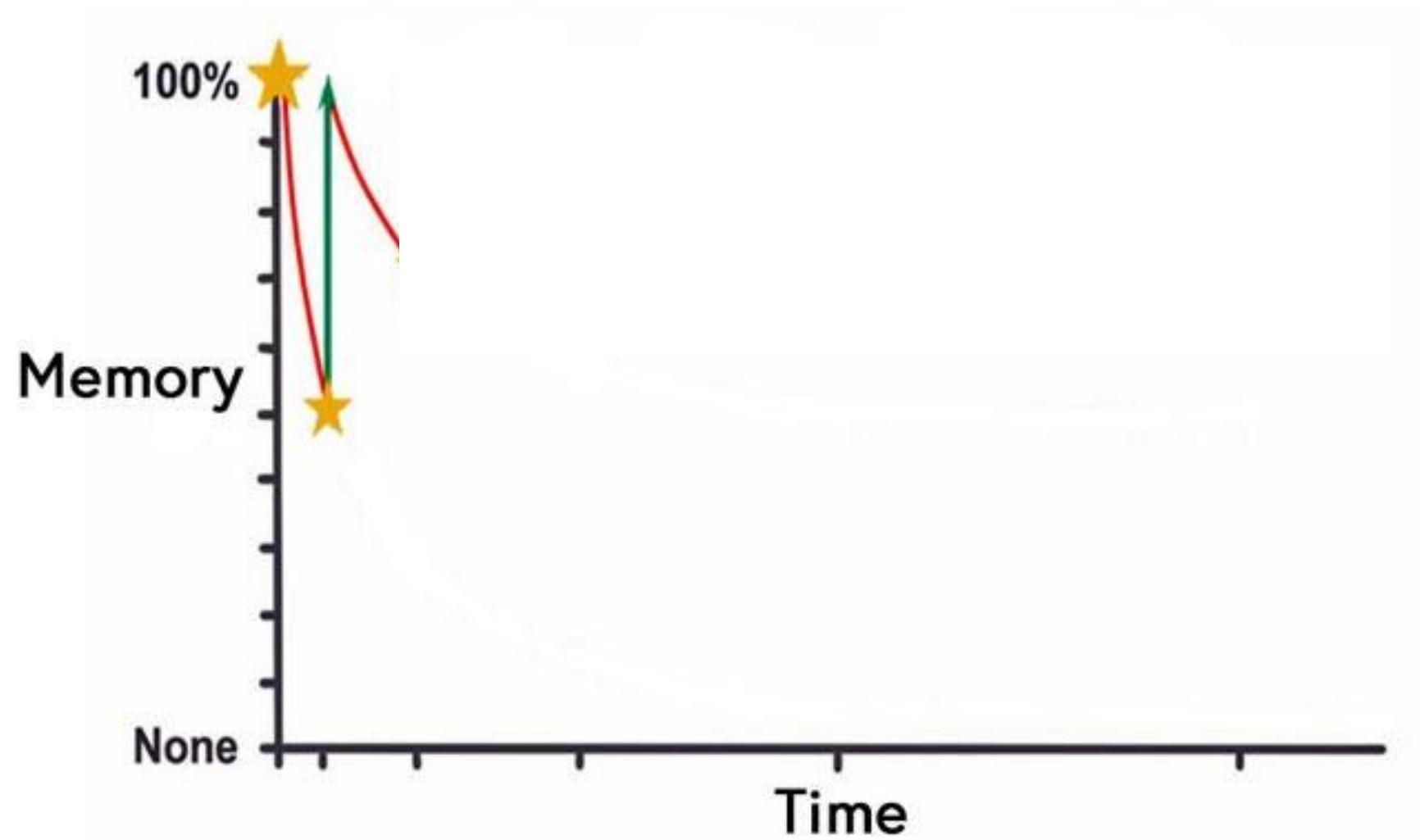
*'If I've learnt something
once, I don't need to go
over it again'*

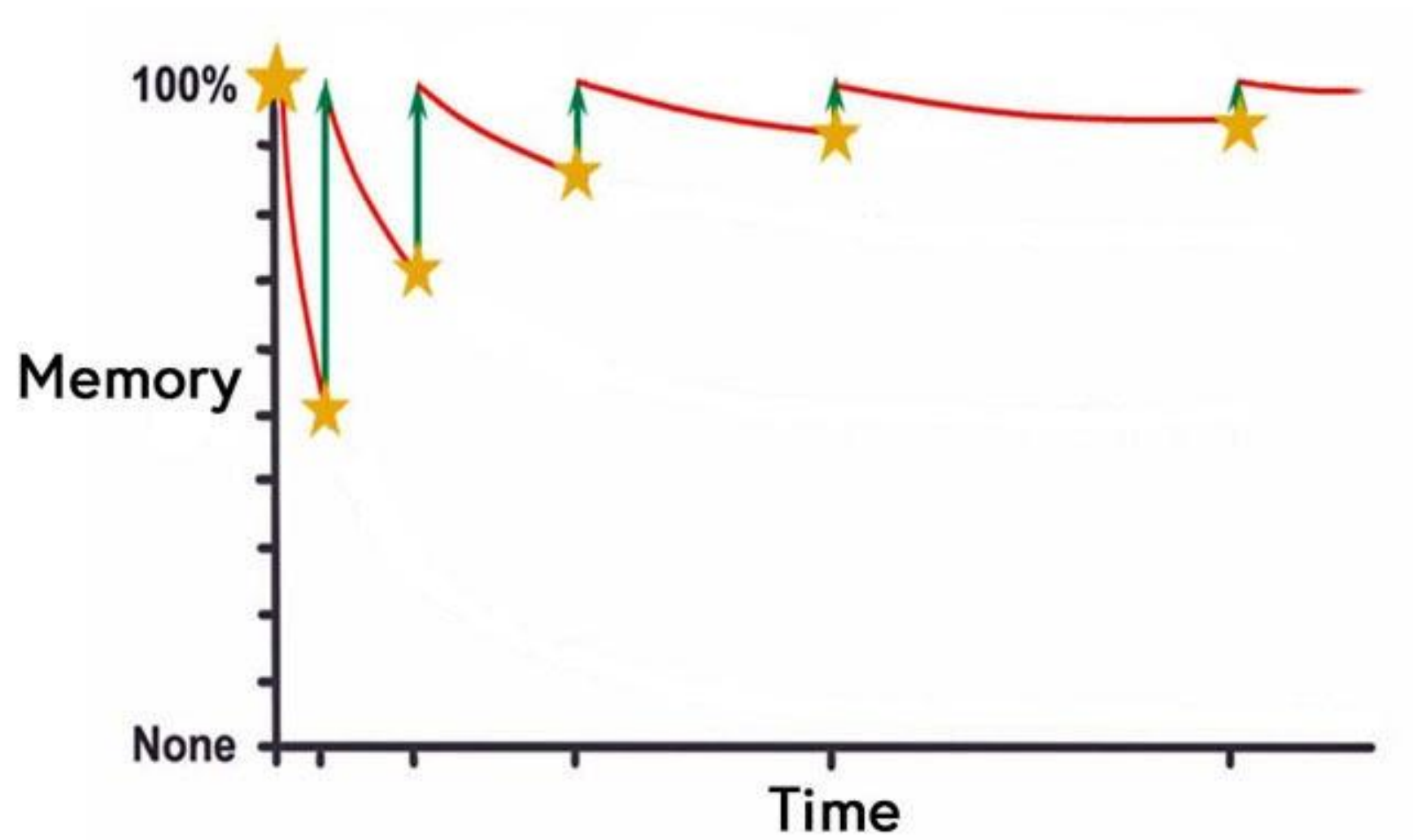


So how can we stop this from happening?



How to beat the curve





Some useful revision strategies



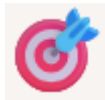
Create a realistic revision timetable



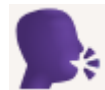
Use active recall and spaced repetition



Make it visual



Practise past papers

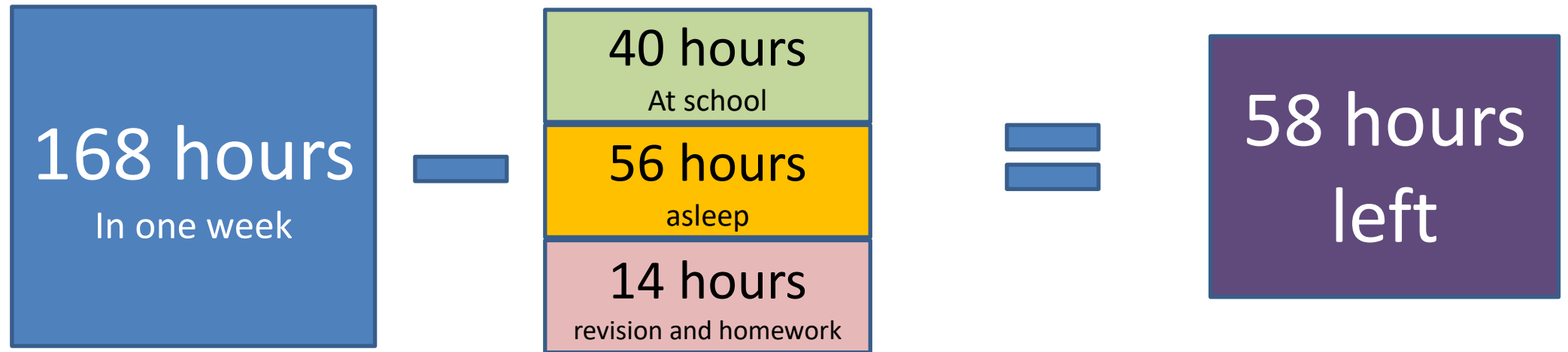


Teach what you've learned

Ask for help

*‘But I don’t have enough
time’*

Outside of school



Time	Monday	Tuesday	Wednesday	Thursday	Friday	Saturday	Sunday
07:00	30 mins Study Breakfast	30 mins Study Breakfast	30 mins Study Breakfast	30 mins Study Breakfast	Breakfast		
08:00	Travel	Travel	Travel	Travel	Travel		
09:00	School	School	School	School	School		
10:00	School	School	School	School	School	Training	Church
11:00	School	School	School	School	School	Training	Church
12:00	School	School	School	School	School	Study	Study
13:00	School	School	School	School	School	Study	Study
14:00	School	School	School	School	School		
15:00	School	School	School	School	School		
16:00	Travel - Diner	School	1st	Travel	Travel	Study	
17:00	Study	Travel	Travel	Training	Visit family		
18:00	Dinner	Dinner	Dinner	Training	Visit family		
19:00	Study	Study	Study	Dinner	Dinner		
20:00		Study	Study	Study			
21:00							

Add 14 hours where
you will do focussed
study

Time	Monday	Tuesday	Wednesday	Thursday	Friday	Saturday	Sunday
07:00	get ready	get ready	get ready	get ready	get ready	sleep	sleep
08:00	travel	travel	travel	travel	travel	sleep	sleep
09:00	school	school	school	school	school	sleep	sleep
10:00	school	school	school	school	school	sleep	sleep
11:00	school	school	school	school	school	sleep	sleep
12:00	school	school	school	school	school		study
13:00	school	school	school	school	school		study
14:00	school	school	school	school	school		
15:00	school	school	school	school	travel		
16:00	travel	school	test	travel			
17:00	study	travel	travel	study	eat	eat	eat
18:00	eat	eat	eat			study	study
19:00	study	study	study	study		study	study
20:00		study	study			study	
21:00							

- science

- Maths

- english

What does the evidence show?

Parental Engagement

+4
months
progress

Homework
and Revision

+5
months
progress

Extending the School Day

+3
months
progress

(source: EEF teaching and learning toolkit)

Intervention

What can we do between
the hours of 8am and 4pm?

Intervention – Extended School Day

Monday	Tuesday	Wednesday	Thursday	Friday
Assembly	Option B (Core+ students attend science)	Option A (Core+ students attend mathematics)	Option C (Core+ students attend English)	Line up and tutor time
Period 1	Period 1	Period 1	Period 1	Period 1
Period 2	Period 2	Period 2	Period 2	Period 2
Break	Break	Break	Break	Break
Period 3	Period 3	Period 3	Period 3	Period 3
Period 4	Period 4	Period 4	Period 4	Period 4
Lunch	Lunch	Lunch	Lunch	Lunch
Period 5	Period 5	Period 5	Period 5	Period 5
Period 6	Period 6	Period 6	Period 6	Period 6
Detentions	English	Period 7	Mathematics	Detentions
	Detentions	Detentions	Detentions	

Intervention – Extended School Day

Monday	Tuesday	Wednesday	Thursday	Friday
Assembly	8.15am Start Time			Line up and tutor time
Period 1	Period 1	Period 1	Period 1	Period 1
Period 2	Period 2	Period 2	Period 2	Period 2
Break	Break	Break	Break	Break
Period 3	Period 3	Period 3	Period 3	Period 3
Period 4	Period 4	Period 4	Period 4	Period 4
Lunch	Lunch	Lunch	Lunch	Lunch
Period 5	Period 5	Period 5	Period 5	Period 5
Period 6	Period 6	Period 6	Period 6	Period 6
Detentions	English	Period 7	Mathematics	Detentions
	Detentions	Detentions	Detentions	

What does the evidence show?

Parental Engagement

+4
months
progress

Homework
and Revision

+5
months
progress

Extending the School Day

+3
months
progress

(source: EEF teaching and learning toolkit)

Home Languages and Careers

- If you can read *and* write any languages such as: French, Spanish, Portuguese, Arabic, Chinese etc we can possibly enter you for a home language GCSE.
- Please see or email Ms Moghal s.moghal@baconscollege.co.uk
- Careers – all students will have a careers interview or workshop to discuss future pathways.
- Parents – if you have any questions, please email: careers@baconscollege.co.uk and address the email to Helen Watson.

Key Dates

- PPE 1 (November Mock Exams) – w/c 3rd November.
- Year 11 Parents Evening – Thursday 4th December – 4pm
- PPE 2 – Monday 23rd February
- Second Year 11 Parents Evening – Thursday 26th March *TBC*
- First GCSE exam – 4th May 2026
- 173 school days until the first GCSE exam (approximately 20 weeks!)

Communication – What to look out for?

- Open channels – please don't hesitate to contact us:
- b.tubb@baconscollege.co.uk – Mr Tubb – Head of Year 11
- n.miah@baconscollege.co.uk – Ms Miah – Deputy Head of Year 11
- s.moghal@baconscollege.co.uk – Ms Moghal – Assistant Principal
- c.pyke@baconscollege.co.uk – Mr Pyke – Assistant Principal
- j.foley@baconscollege.co.uk – Mr Foley – Head of Sixth Form
- l.Rayner@baconscollege.co.uk – Ms Rayner - SENDCO
- h.Watson@baconscollege.co.uk – Ms Watson – Careers Advisor

Satchel One (Show My Homework)

Newsletter

Arbor

Questions

